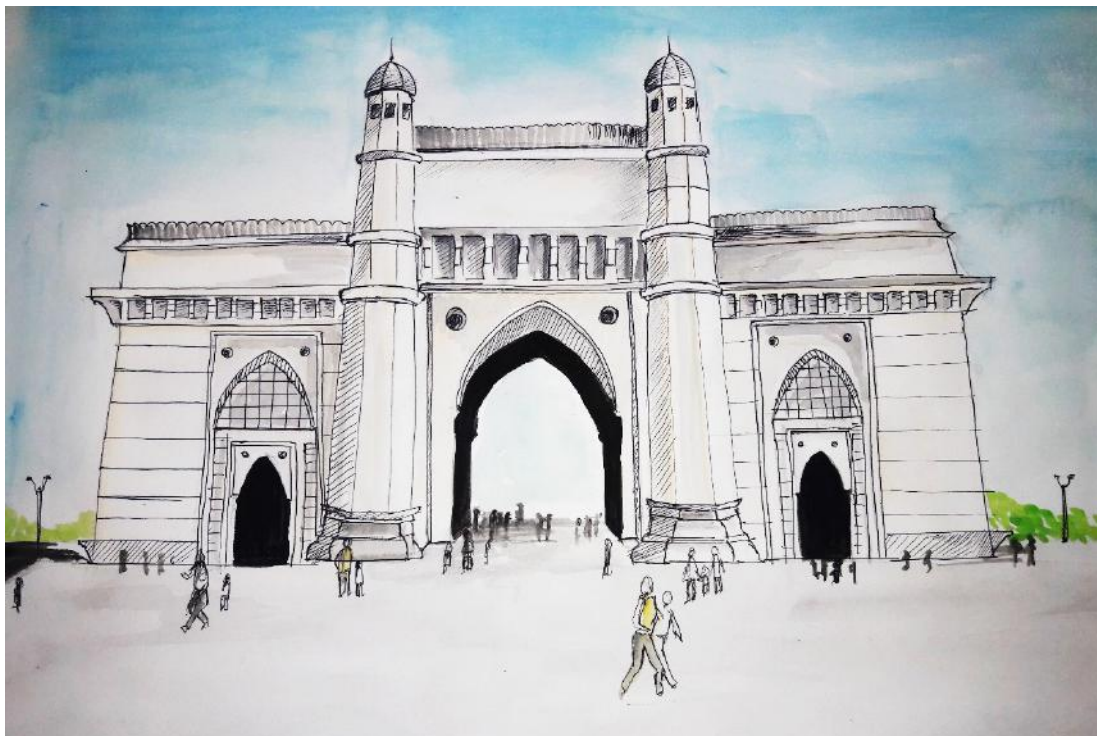


## Student's Work

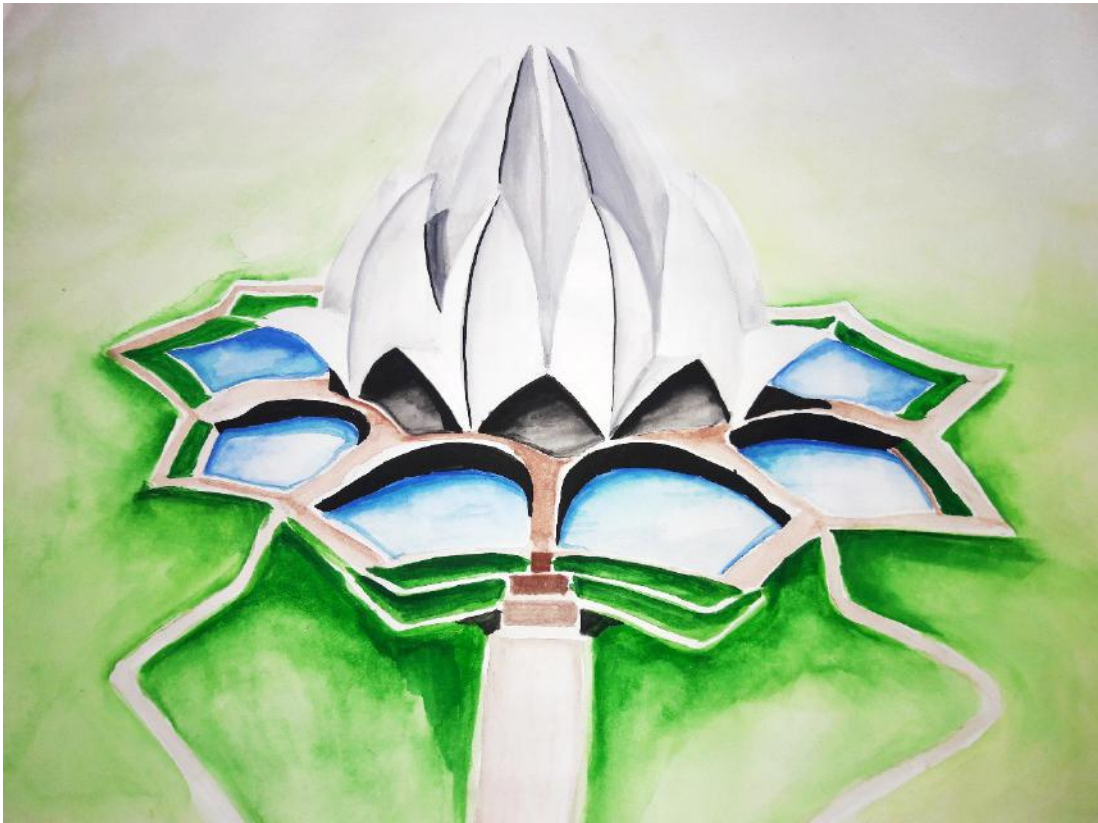
### A. Drawings & Sketches:



Painting of Hagia Sophia



**Painting of Gateway of India**



**Painting of Lotus Temple**

**Painting of Char Minar**

**Sketch of Priyanka Chopra (Kashibai)**

**Sketch of Owl**

**Assignment: Biomimicry in architecture (Lotus Temple)**

## Architectural Drawing of Hagia Sophia







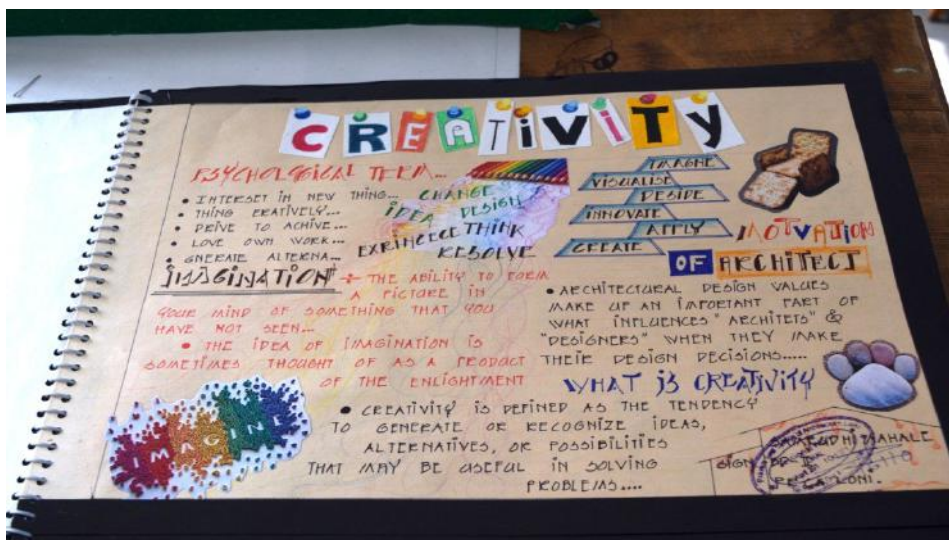




Assignment: Mental Association



Assignment: Role of Fantasy & Imagination

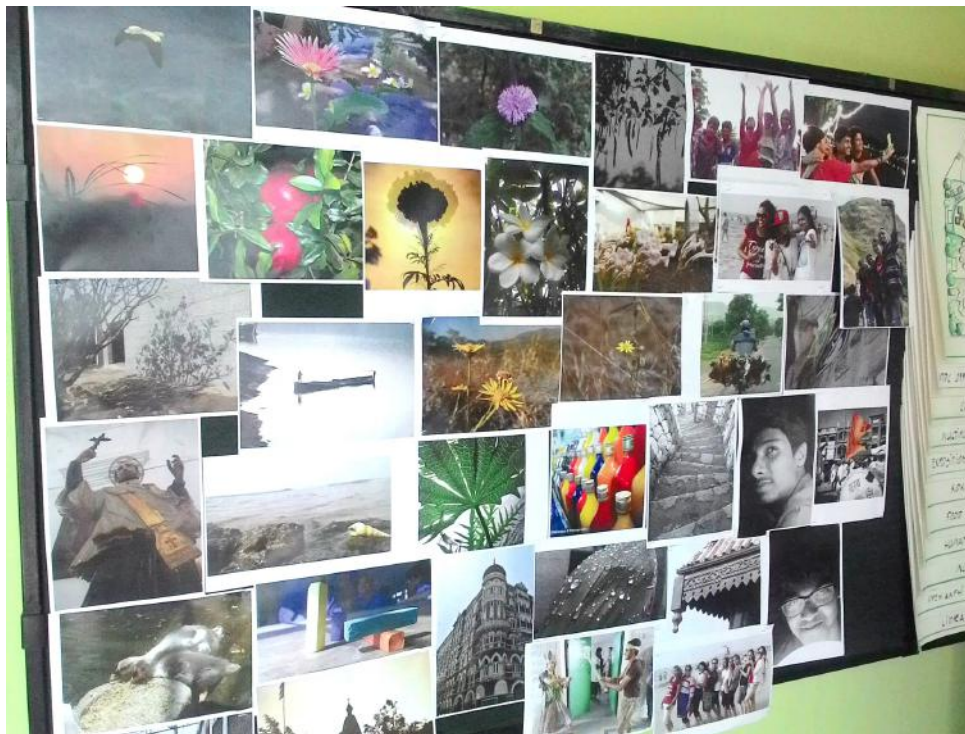


Assignment: Creativity





### Presentation Panel (Drawings & Sketches)



### Presentation Panel (Photography)



B. **Workshop Models:**





**Model of Abhishek Restaurant, Shirdi**



**Study Model of Eiffel Tower**





**Model of Burj Khalifa**



**Model of Private Residence**





**Miniature Sculpture**



**Model of Sanchi Stupa**

c. **Photography:**











